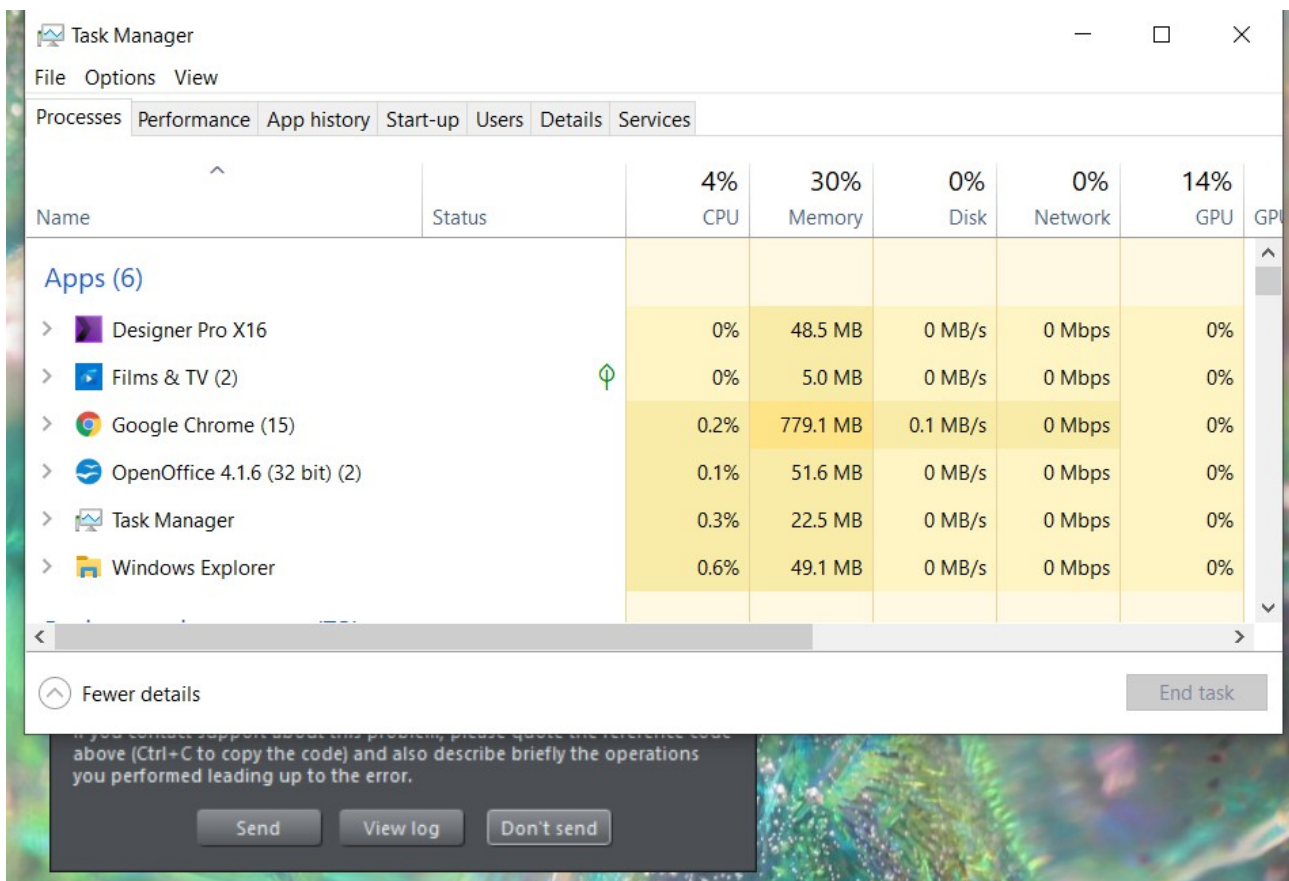
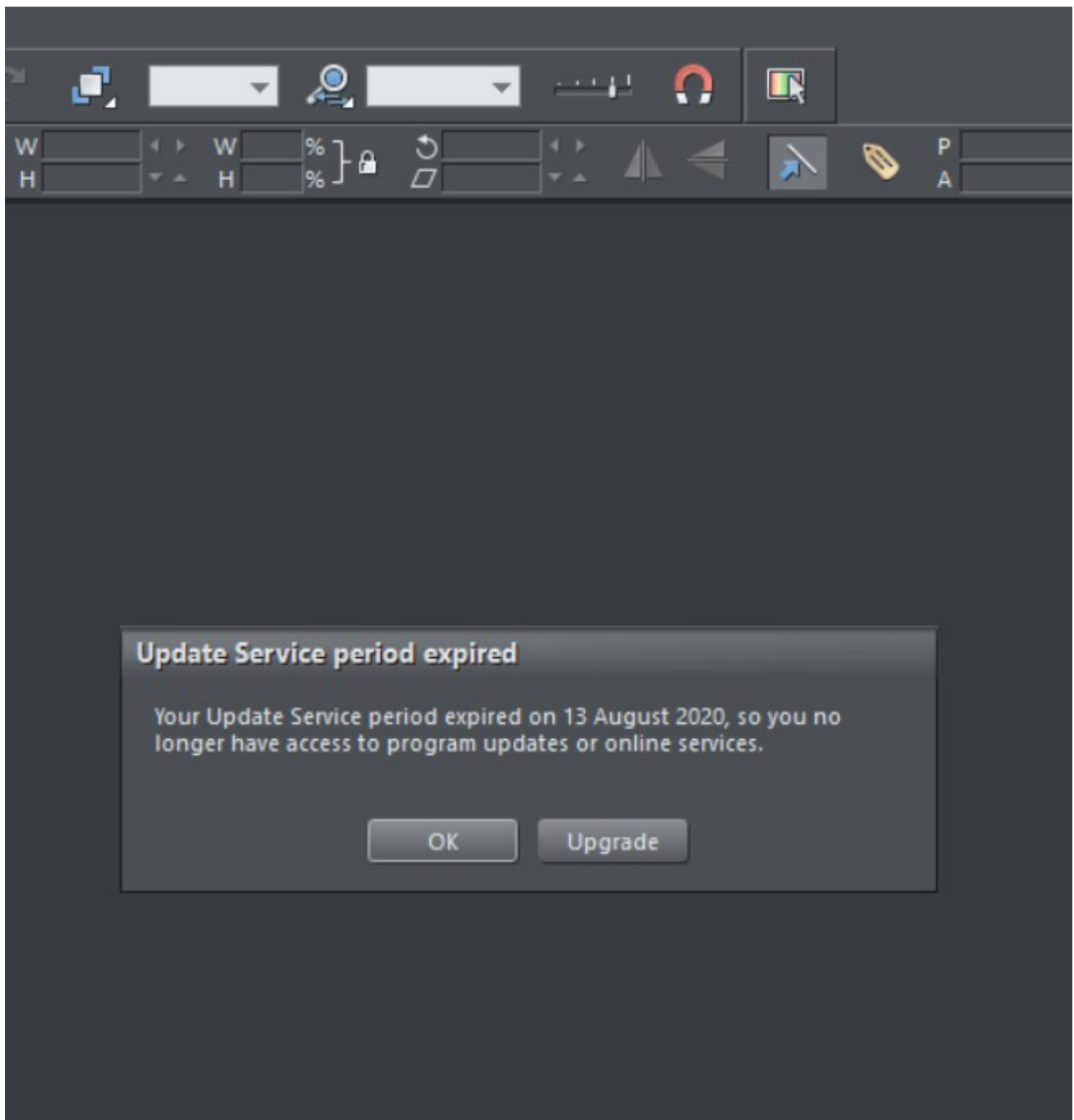


Well let's start here. This happened when I double clicked on a bitmap to call the xpe editor.

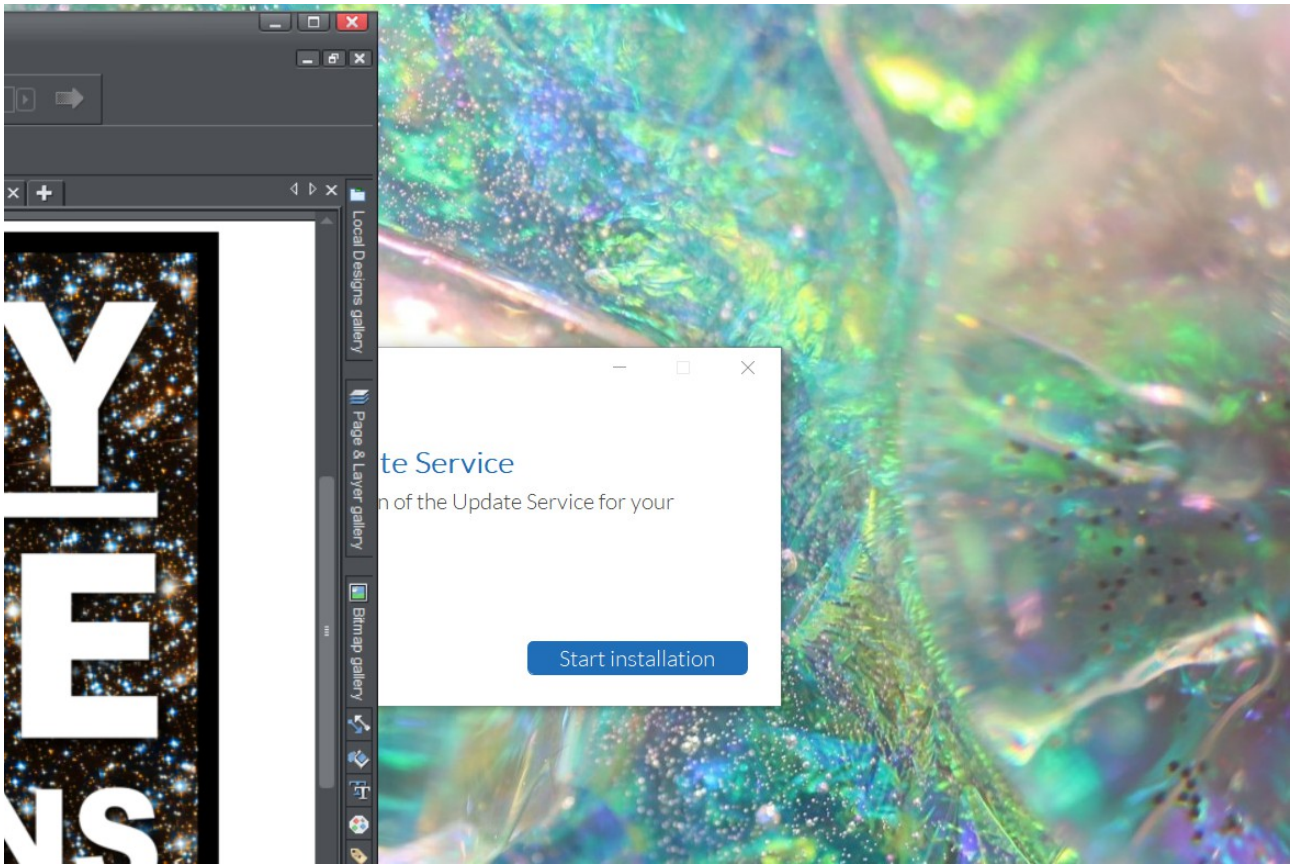
Couldn't get that window to close by any means known to me so called CTR Alt delete.



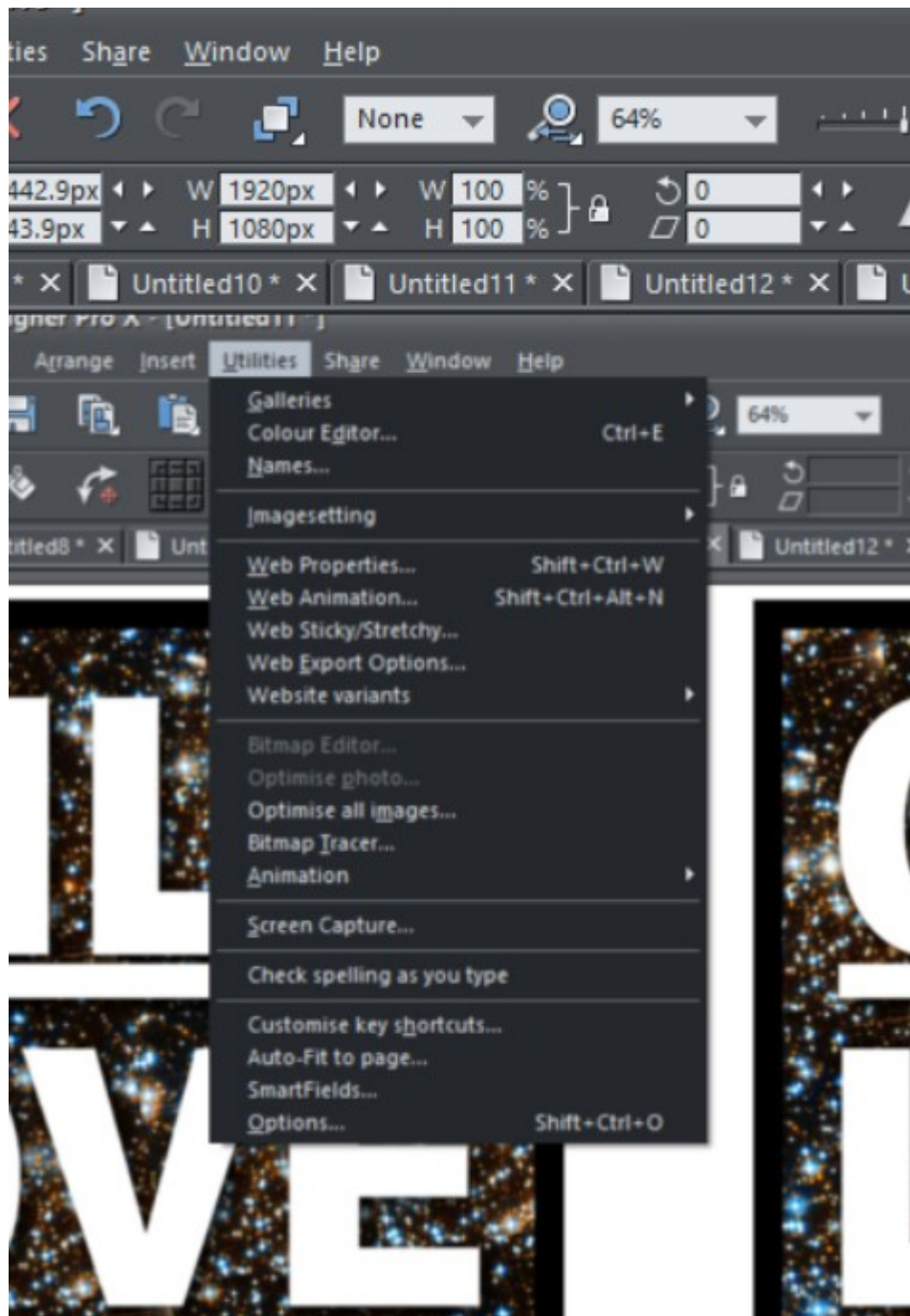
Great! Let's restart the program.



Welcome to my daily update hell.

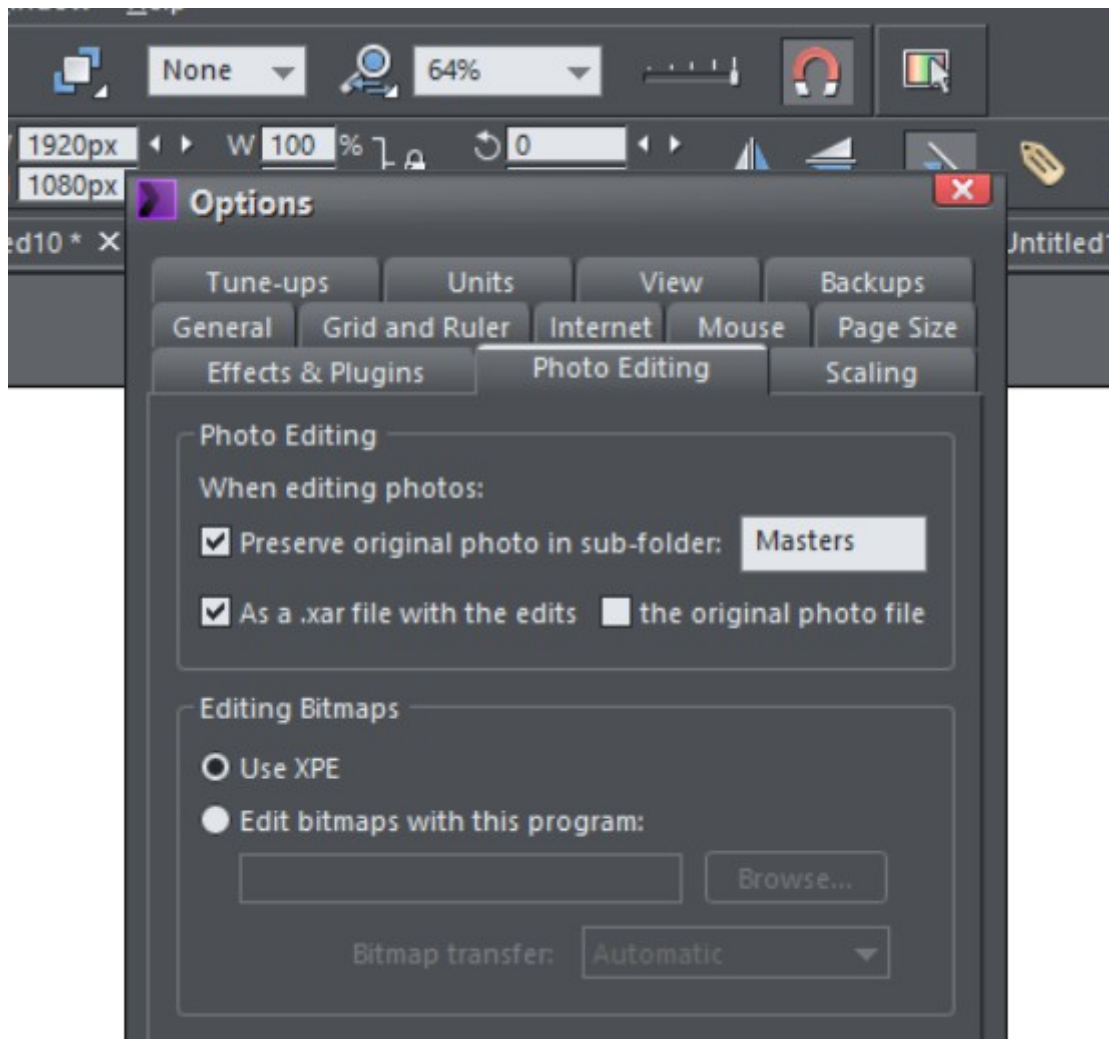


If you had the Xara window full screen, you'd now be buggered. Because the next two pop ups hide behind it and you can't procede until you x-d that bugger away.



Now, to my problem.

The greyed out bitmap editor. And the absence of all the filters, my own and those that came with Xara.



Button is firmly clicked!






No effects icon? Where did it go?

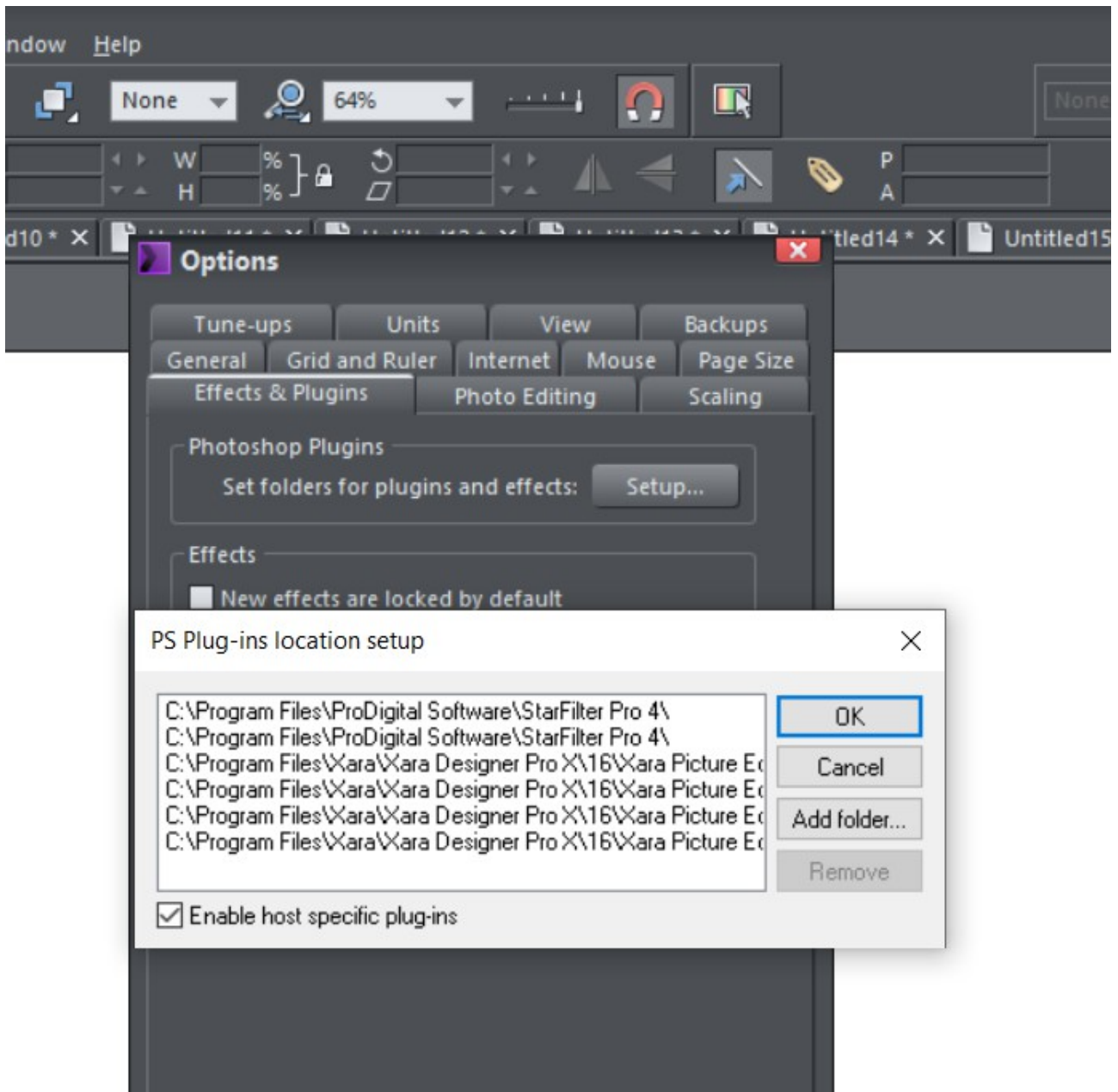
Tried to double click on a photo as suggested.

This called xpe but deposited it behind the main window. At this point, NOTHING works any more apart from a pretty bell chime, and the task manager has to be called to stop the program. Upon doing this, I saw a weird thing called cambridge I've not seen before. Who knows ... I thought I'll add it.

Apps (8)

- >  CamBridge32.exe (32 bit)
- >  Designer Pro X16
- >  File Explorer (2)

0%	46.0 MB	
0%	184.1 MB	
0%	5.0 MB	



3rd restart, to show I've set the paths to the filters. Used to work OK until about ten days ago.

I do my work on an older computer and got a new one to have continuity when the old one fries. I honestly have no idea what I'm going to do if it does.

This is so unstable and unpredictable.

Is there an older, stable version I can buy somewhere?

Computer =

Windows edition

Windows 10 Home

© 2019 Microsoft Corporation. All rights reserved.

System

Manufacturer:	HP
Model:	OMEN by HP Laptop 17-cb0xxx
Processor:	Intel(R) Core(TM) i7-9750H CPU @ 2.60GHz 2.59 GHz
Installed memory (RAM):	16.0 GB (15.9 GB usable)
System type:	64-bit Operating System, x64-based processor