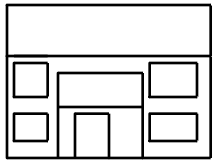
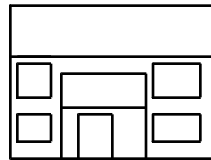
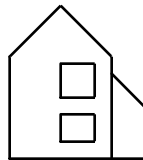
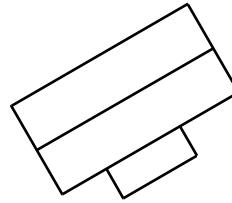
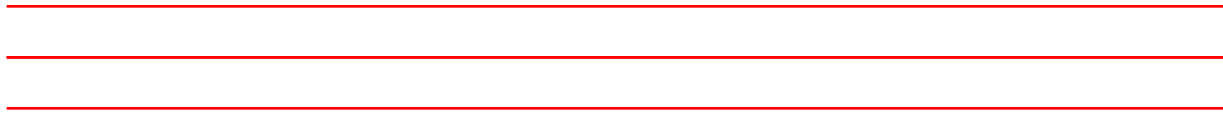


Always ensure that you have positioned the plan correctly and to the correct scale. You must also draw in the correct position the Picture (or Projection Plane), the Ground Line and the Eye Level.

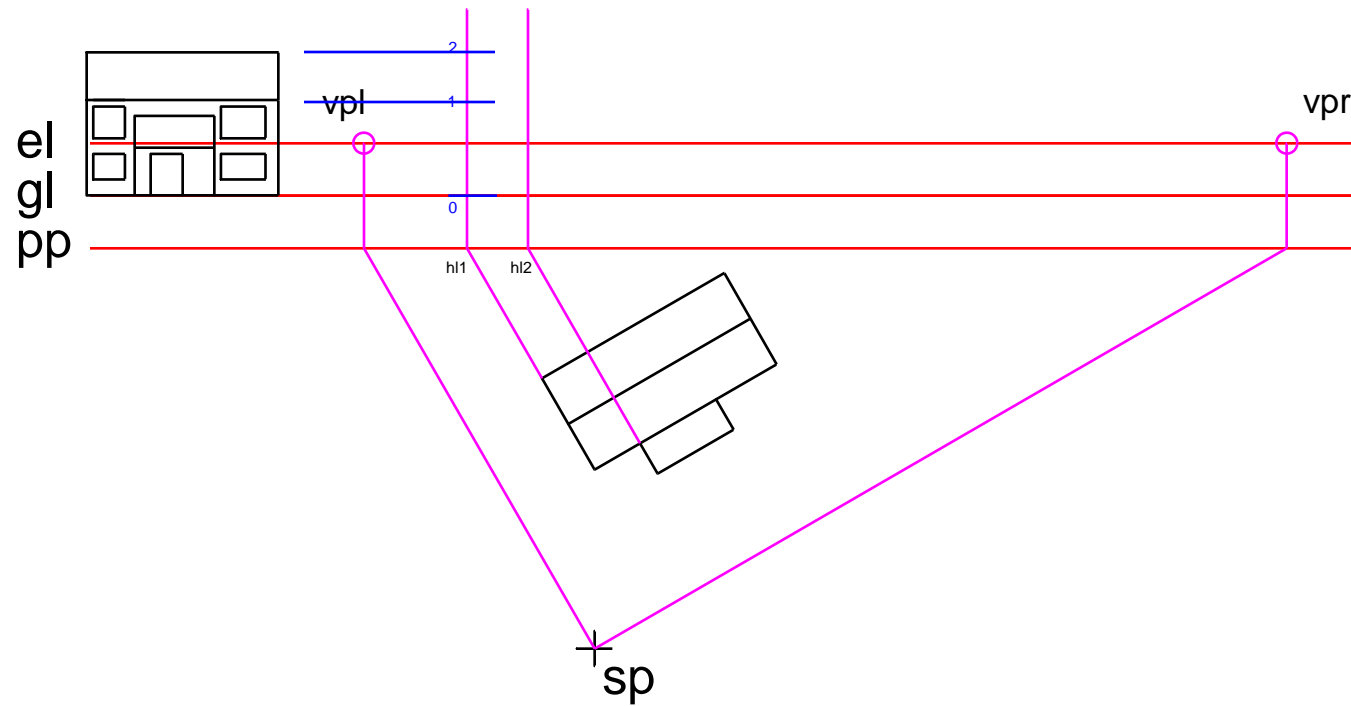


el
gl
pp

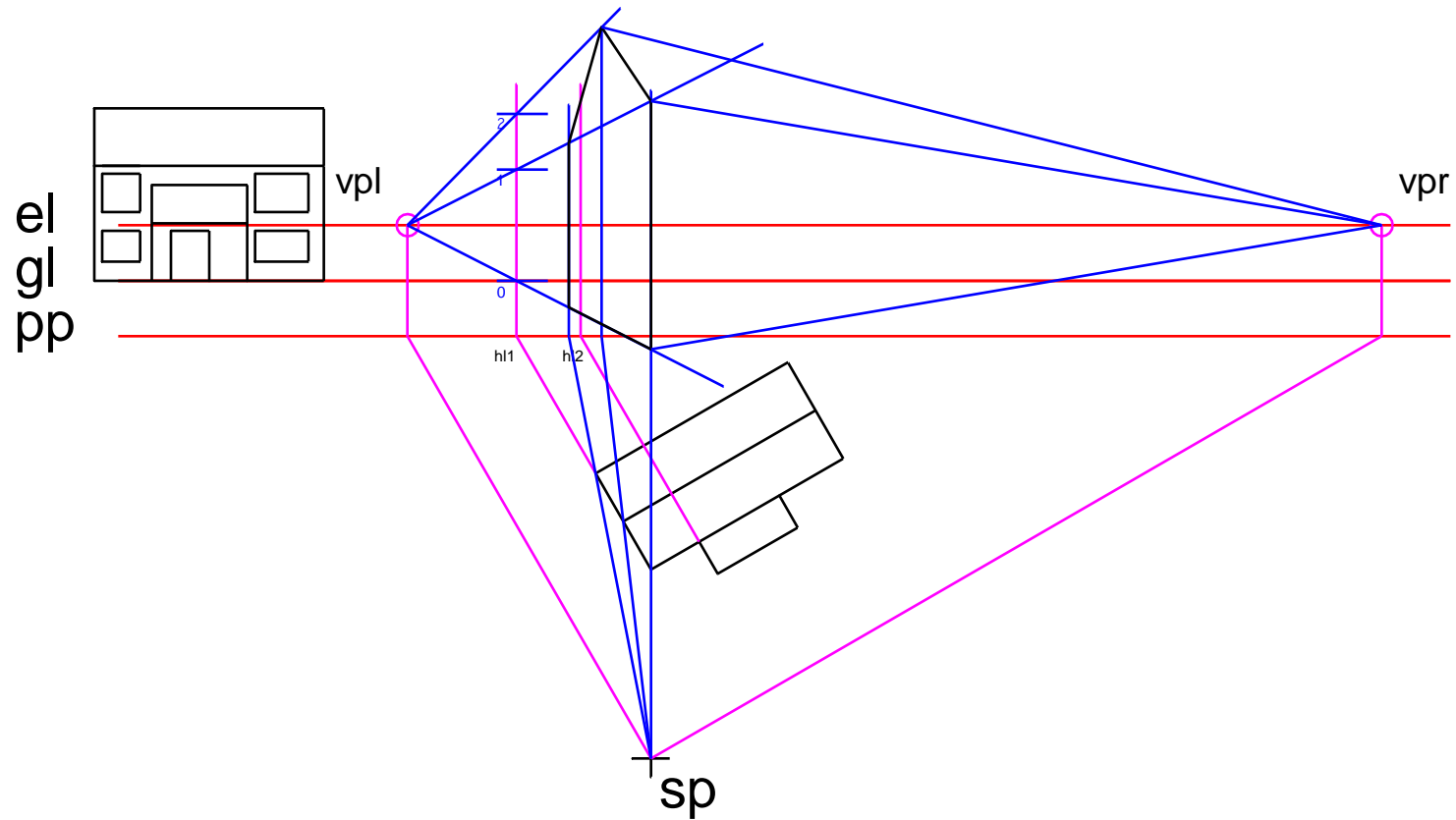


+
sp

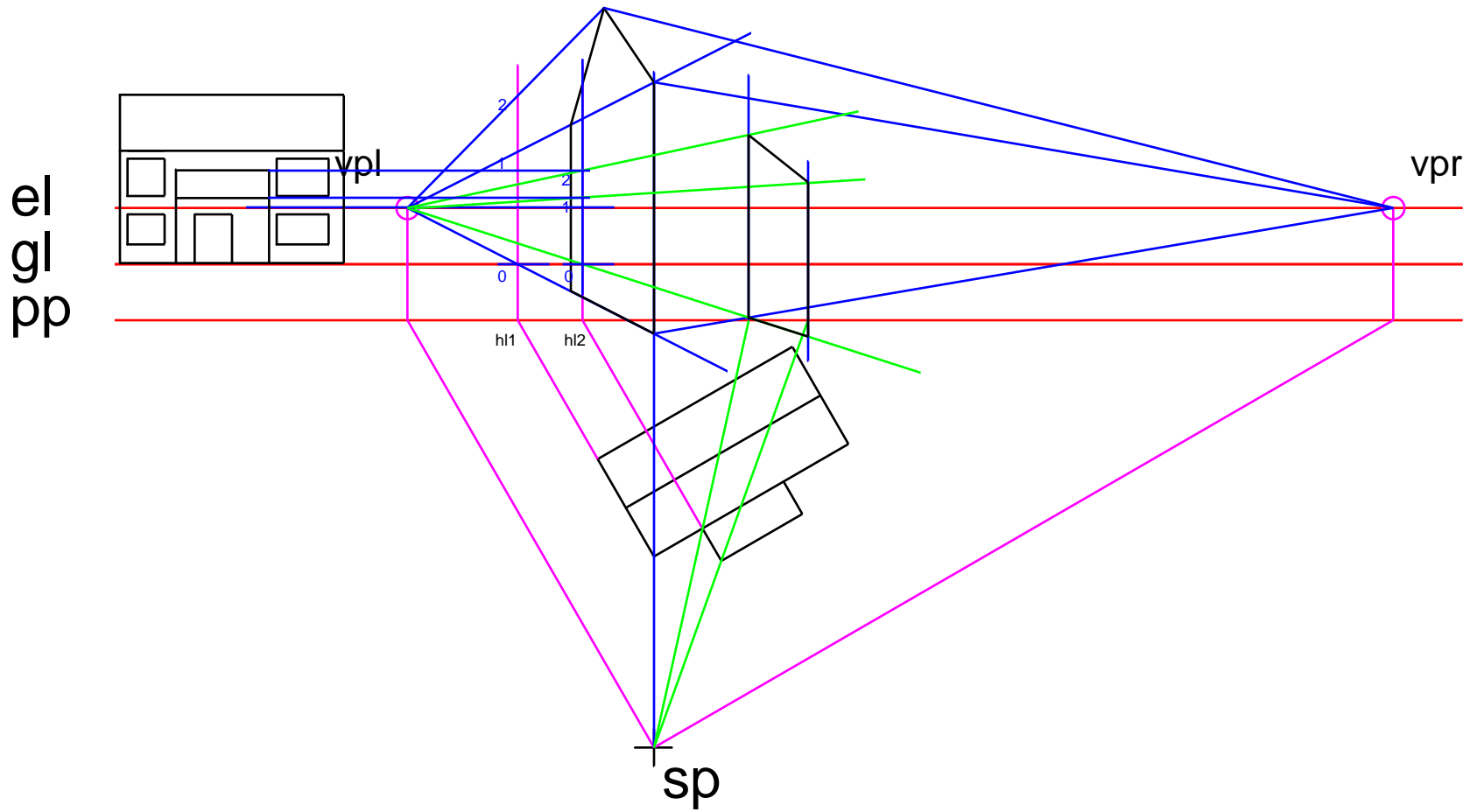
First project from the Spectator Point and determine the position of the LH and the RH vanishing points. Then decide which height lines should be produced.



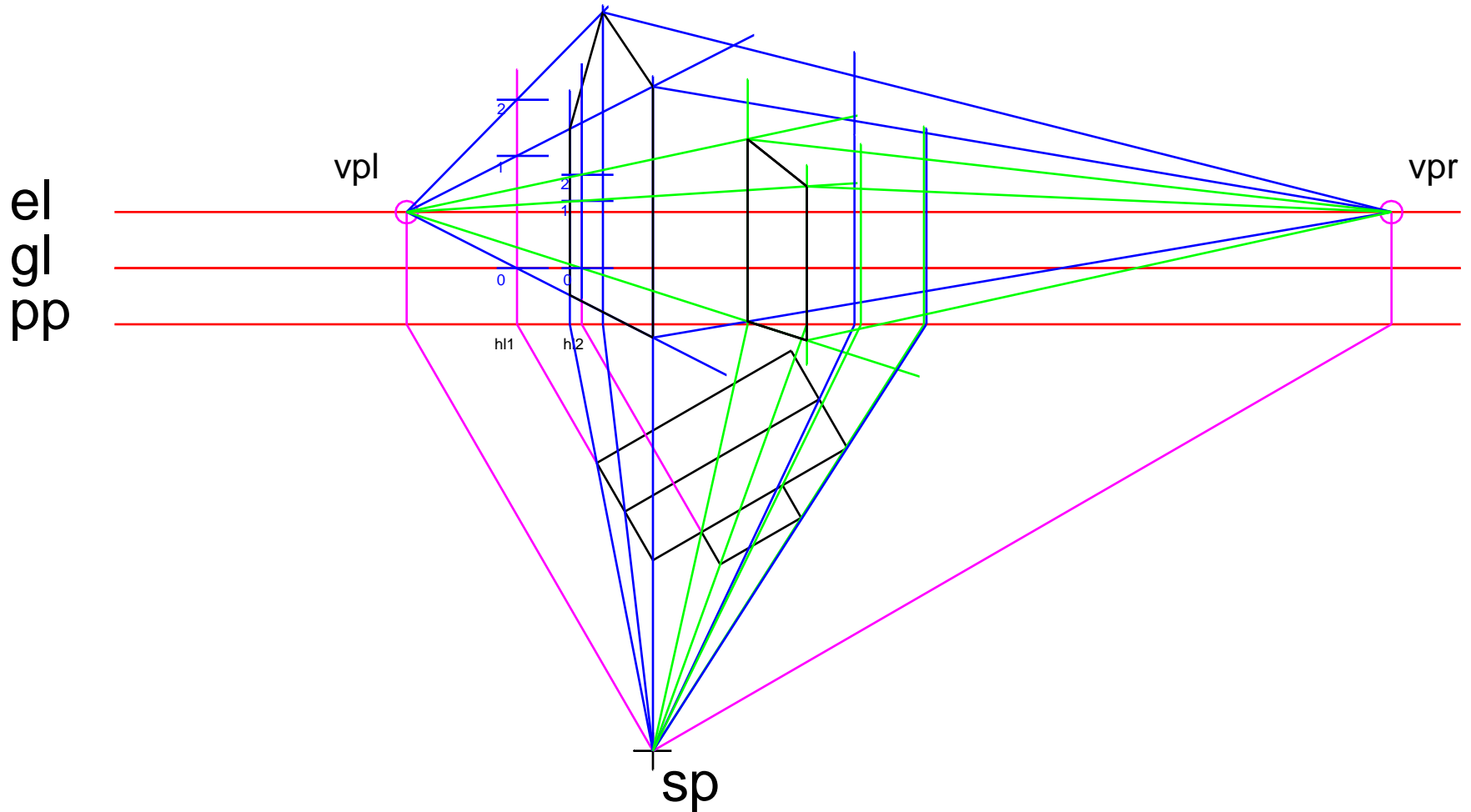
*First produce the left facing gable of the house using the LH VP and
HL1*



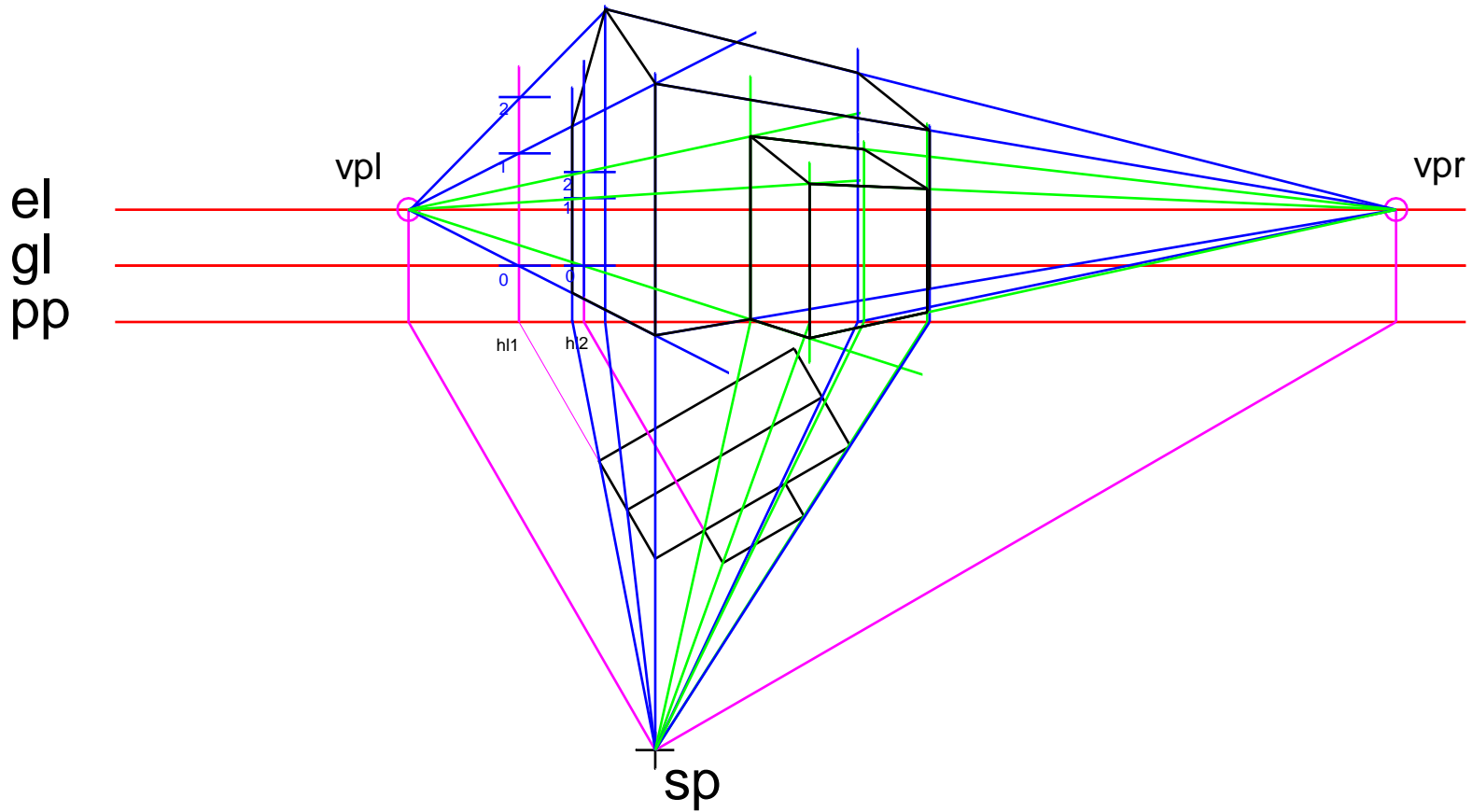
Next using VPL and HL2 produce the left facing gable of the porch



Now project the remaining corners of the house and the porch

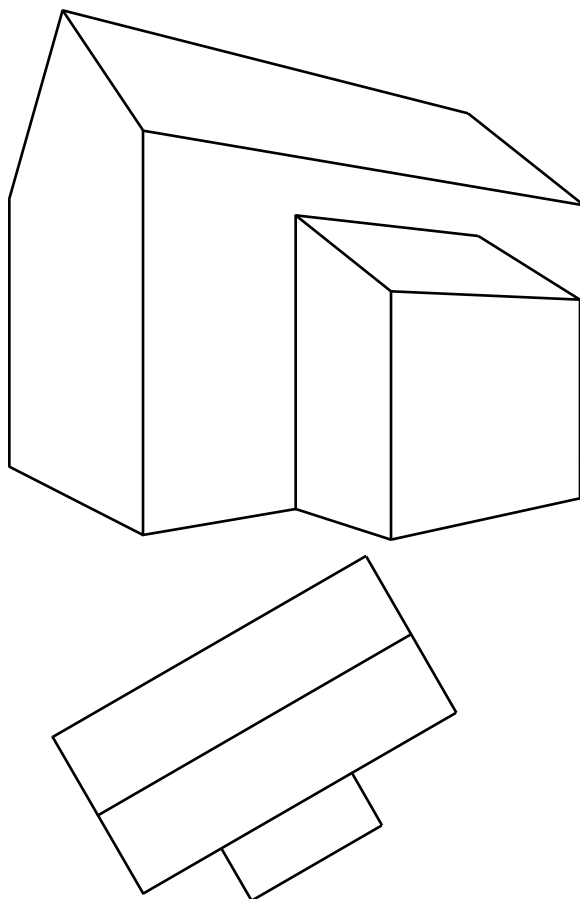


Now line in the outline of the house and porch.

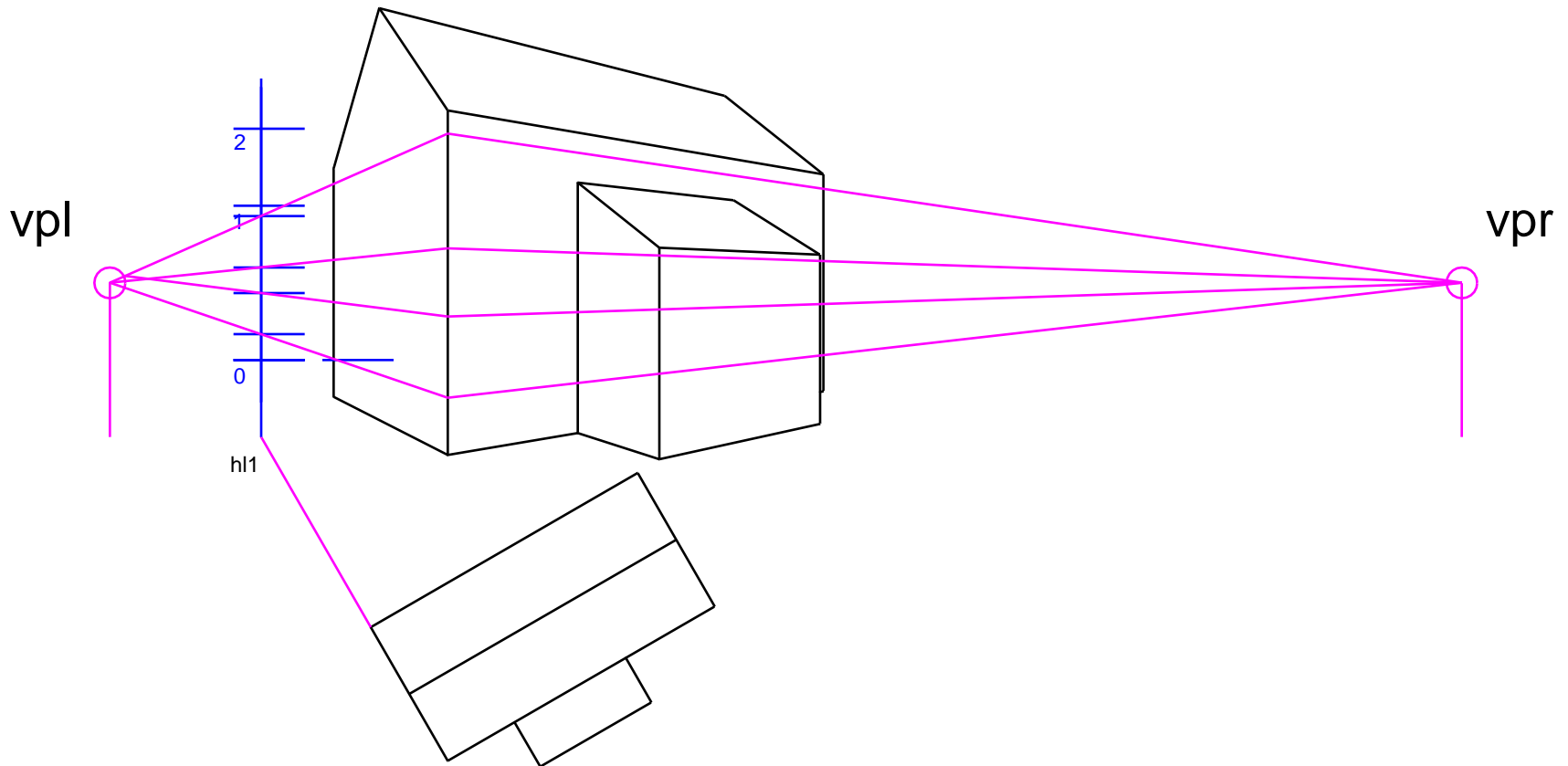


The lined-in house and porch.

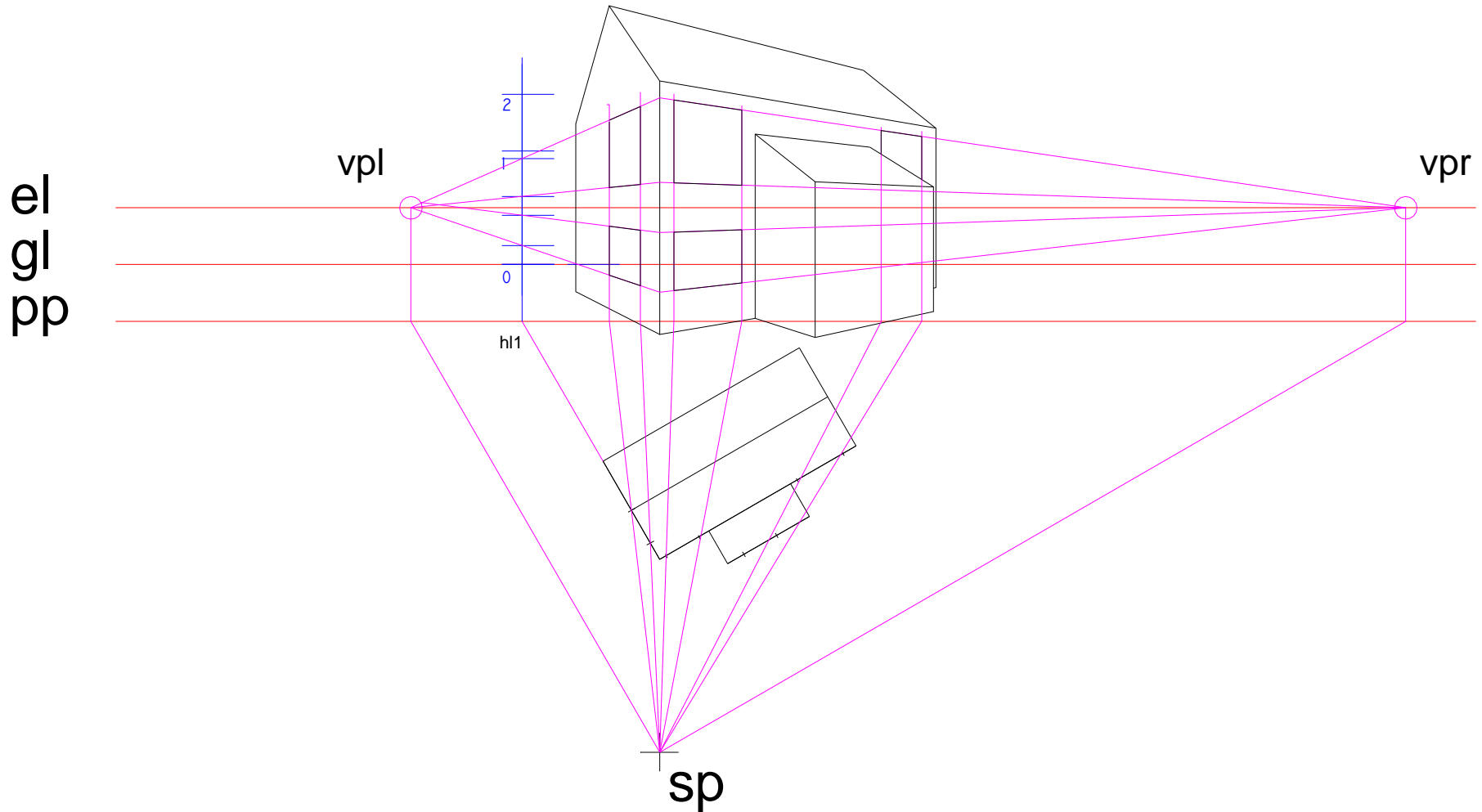
vpl



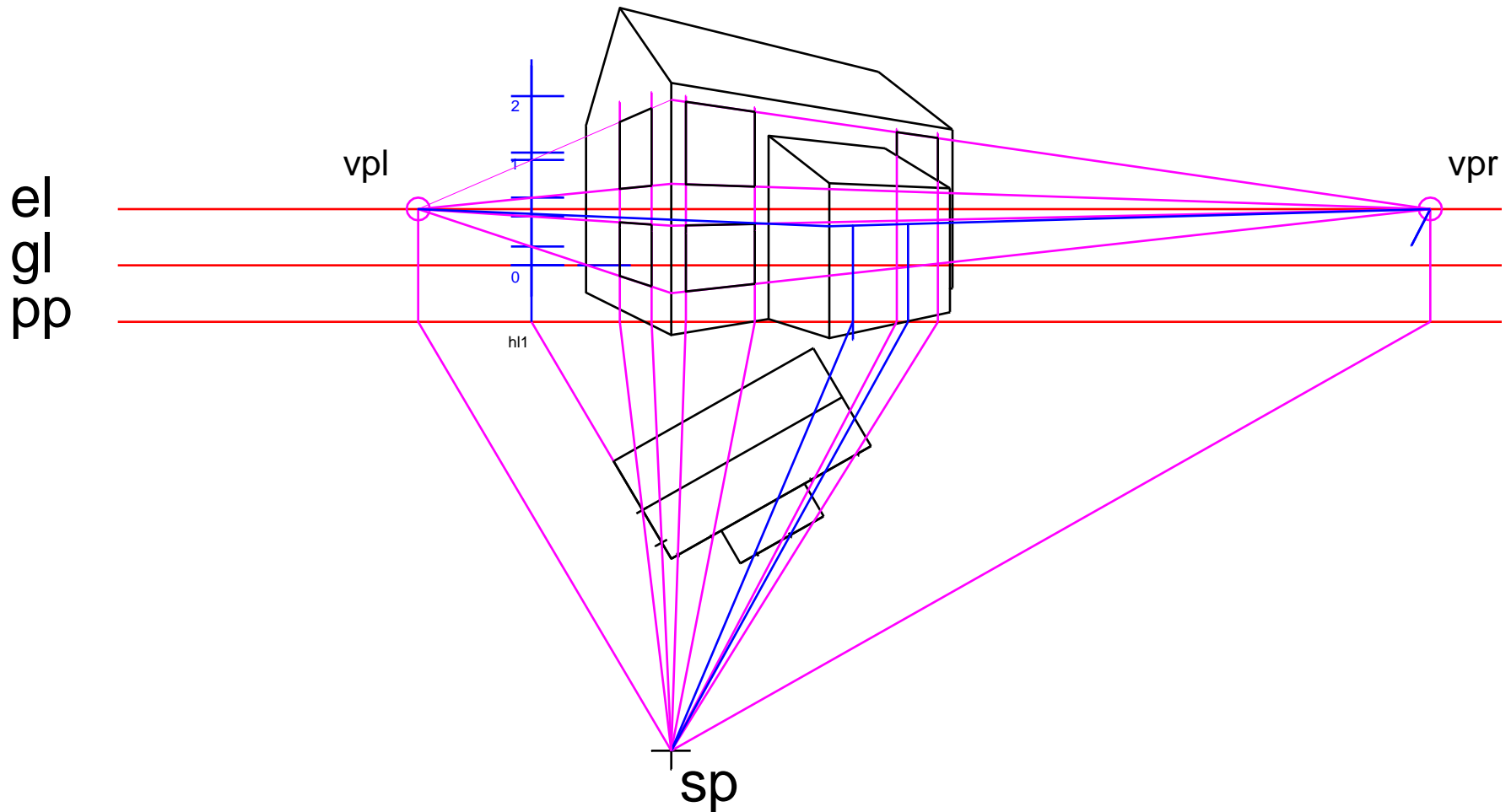
Either use a new height line to produce the windows or use the existing height line for the house gable and project round the walls of the house as shown below, care must be taken though.



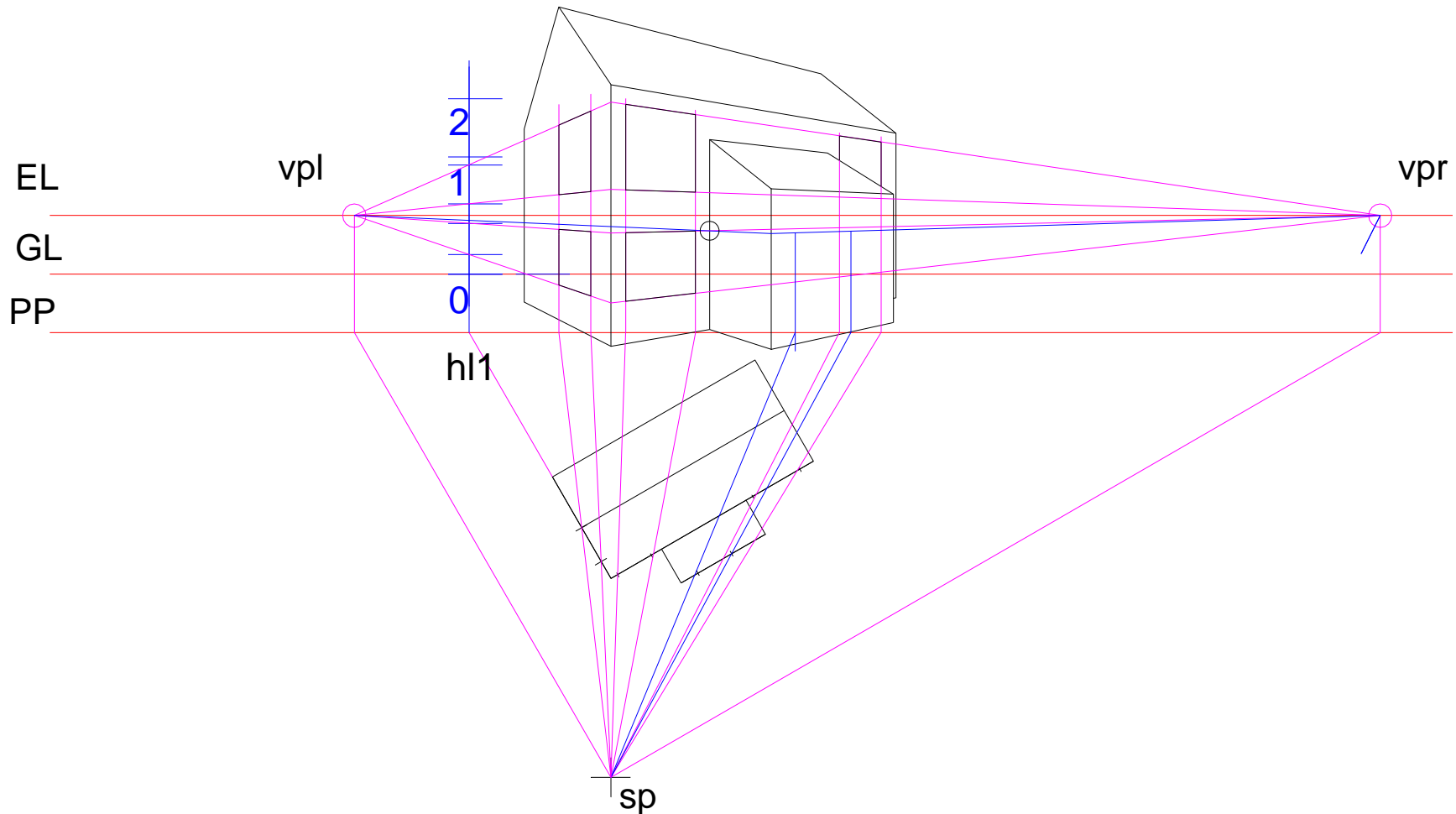
Having marked out the position of the windows on the plan, now view the windows from the spectator point and project these onto the perspective view.



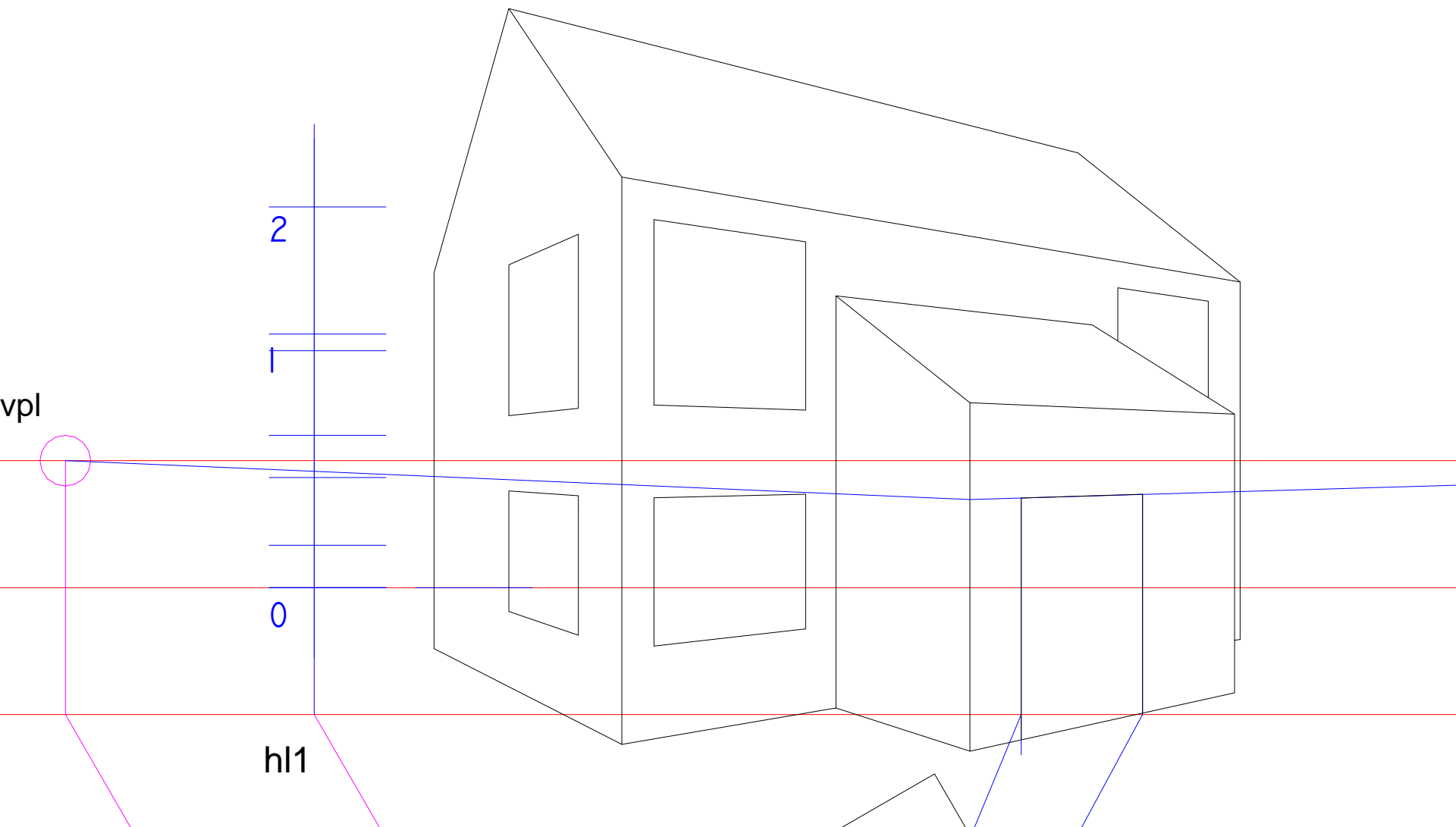
By continuing the technique of projecting in perspective round the walls, the position of the front door can be determined. See the projection lines in blue below. See next slide for clarification.



Note the top of the door and the top of the window are at the same height . Note where the blue perspective line for the top of the door passes through the intersection of the purple perspective line for the top of the window and the corner of the porch.



Now line in the door as shown below.



***The completed drawing of the house and porch is shown below.
Good luck with your NAB test!!***

